



Key personnel

- ◆ Head of School: Dr. Kevin Yoshihara (kevin.yoshihara@kist.ed.jp)
- ◆ Secondary School Principal: Mr. Mark Cowe (mark.cowe@kist.ed.jp)
- ◆ IB DP Coordinator: Mr. Hiro Komaki (hiro.komaki@kist.ed.jp)
- ◆ University Counselor: Mr. Thomas Waterfall (thomas.waterfall@kist.ed.jp)

Mission

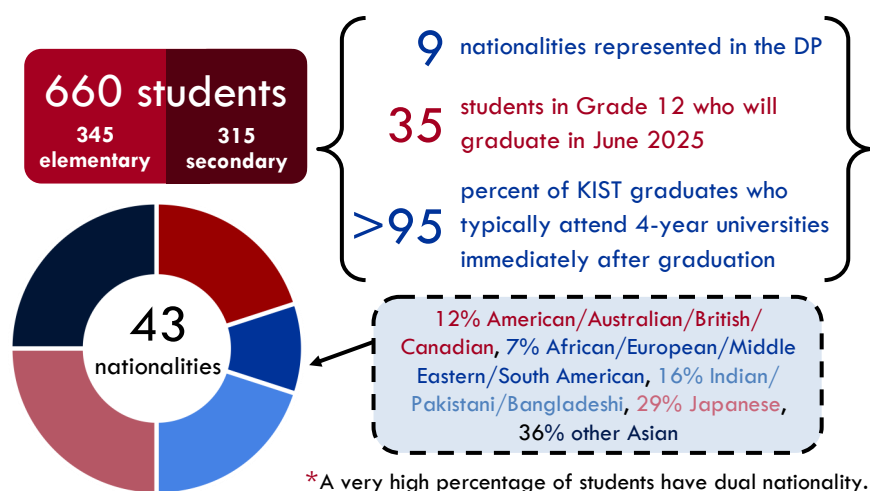
K. International School Tokyo provides academically motivated children from diverse cultural and social backgrounds with a high-quality education in a safe and supportive environment in order to develop competent, academic individuals with high moral character who make meaningful contributions to our global community.

School overview

K. International School Tokyo (KIST) is a private, coeducational, non-denominational day school serving the international community of Tokyo from pre-Kindergarten through Grade 12. Authorized by the International Baccalaureate Organization as an IB World School, KIST is fully authorized to offer the Primary Years Programme (PYP) and the Diploma Programme (DP). Additionally, it is authorized by Pearson Education's Edexcel to deliver the IGCSE curriculum. KIST is accredited by the Council of International Schools (CIS) and is recognized as an educational foundation by the Tokyo Metropolitan Government. English is the language of instruction at all levels.

Enrollment and admissions

At KIST, we have...



As an international school, KIST welcomes internationally-minded students, regardless of race, national or ethnic origin, religion, gender or socio-economic background who demonstrate a commitment to our mission and guiding beliefs.

To promote diversity, we maintain a balance of nationalities at each grade level, as well as in individual classes. We also ensure that the balance of nationalities and language groups is diverse, while at the same time does not compromise the position of English as the language of instruction.

Staff

- 75** full time teachers
- 22** teachers hold postgraduate degrees (Master or PhD)
- 23** different nationalities of staff

School year

KIST ensures a minimum of 180 days in the school year, divided into 2 semesters:

- ◆ Semester 1: August–December
- ◆ Semester 2: January–June

Curriculum and grading in the DP

In Grades 11 and 12, all students are enrolled in the 2-year IB Diploma Programme. All students are required to study six subjects: a maximum of three at Standard Level (SL) and a maximum of four at Higher Level (HL). In addition, they must complete Creativity, Activity, Service (CAS); take a course in Theory of Knowledge (TOK); and write an Extended Essay of 4,000 words. School-based examinations take place throughout Grades 11 and 12, with externally set examinations at the end of Grade 12.

Academic achievement is graded on the IB 1 to 7 scale, with 1 being the lowest and 7 being the highest mark attainable. As an IB World School, it is our philosophy neither to rank students against each other nor to calculate grade point averages (GPA).

IB grade descriptors

7: Excellent | 6: Very good | 5: Good | 4: Satisfactory | 3: Mediocre | 2: Poor | 1: Very poor

IB DP subject options

The following courses are offered during the 2023–25 DP cycle:

- ◆ English A Language and Literature HL/SL
- ◆ Japanese A Language and Literature HL/SL
- ◆ Japanese B HL/SL
- ◆ Business Management HL/SL
- ◆ Economics HL/SL
- ◆ Geography HL/SL
- ◆ Psychology SL (Online)
- ◆ Biology HL/SL
- ◆ Chemistry HL/SL
- ◆ Environmental Systems and Societies SL
- ◆ Physics HL/SL
- ◆ Mathematics A&A HL/SL
- ◆ Mathematical A&I SL
- ◆ Visual Arts HL/SL

A variety of online course options are also available through the IB affiliated Pamoja Education.

In 2024, 37% of KIST students attained a Bilingual IB Diploma.

Graduation requirements

To graduate with an IB Diploma, students must meet all external requirements set by the International Baccalaureate. These include a minimum score of 24 in six subjects, as well as successful completion of the TOK, Extended Essay, and CAS components.

To graduate with a KIST High School Diploma, students must successfully complete all course requirements for Grade 11 and 12, a research paper, and service program contributions.



DP results 2022 to 2024

Year of graduation	2024	2023	2022
KIST DP average	41.5	41.1	42.1
IB DP world average	30.3	30.2	32.0
KIST highest DP score	45	45	45
KIST G12 graduates	39	37	35
KIST G12 DP graduates	38	32	33
% of students in full DP	97%	86%	94%
# Diplomas attained	38	32	33
% attaining Diplomas	100%	100%	100%

Class of 2024 results

Number of students with 45 points in the DP	2
Percent of students with 45 points in the DP	5%
Number of students with 40 points or above in the DP	31
Percent of students with 40 points or above in the DP	82%

DP results for the class of 2024 (for courses offered at KIST)

DP Subject	# of students	% of students attaining			School average	World average	KIST +/- over WA
		7	6	5			
English A L&L HL	9	56%	11%	33%	6.22	4.72	1.50
English A L&L SL	29	41%	45%	14%	6.28	4.91	1.37
Japanese A L&L HL	7	14%	29%	57%	5.57	5.10	0.47
Japanese A L&L SL	7	14%	43%	43%	5.71	4.82	0.89
Japanese B HL	10	100%	0%	0%	7.00	6.27	0.73
Japanese B SL	11	91%	9%	0%	6.91	5.06	1.85
Business Management HL	9	67%	33%	0%	6.67	4.92	1.75
Business Management SL	1	0%	100%	0%	6.00	4.89	1.11
Economics HL	15	47%	53%	0%	6.47	5.12	1.35
Economics SL	7	86%	29%	0%	6.86	4.80	2.06
Geography HL	11	73%	18%	9%	6.64	5.25	1.39
Geography SL	1	0%	100%	0%	6.00	4.79	1.21
History HL	2	100%	0%	0%	7.00	4.25	2.75
History SL	2	50%	50%	0%	6.50	4.69	1.81
Biology HL	11	9%	64%	27%	5.82	4.41	1.41
Biology SL	3	0%	100%	0%	6.00	4.18	1.82
Chemistry HL	14	93%	7%	0%	6.93	4.69	2.24
Chemistry SL	6	67%	33%	0%	6.67	4.23	2.44
Environmental Sys. & Soc. SL	5	80%	20%	0%	6.83	4.19	2.64
Physics HL	15	73%	20%	7%	6.67	4.85	1.82
Physics SL	4	100%	0%	0%	7.00	4.23	2.77
Mathematics A&A HL	11	100%	0%	0%	7.00	4.86	2.14
Mathematics A&A SL	24	100%	0%	0%	7.00	4.54	2.46
Mathematics A&I SL	3	100%	0%	0%	7.00	3.92	3.08
Visual Arts HL	3	0%	67%	33%	5.67	4.25	1.42
Visual Arts SL	3	0%	0%	67%	4.67	3.90	0.77

*The above school averages are calculated for students who attained IB Diplomas

University matriculations 2021–24

Regularly, 100% of KIST graduates attain university/college acceptance. This list contains the final destinations for students during the time period indicated above, not only offers. * indicates that a full or partial scholarship was awarded.

Asia (excluding Japan)

Chinese University of Hong Kong*
 Hong Kong University of Science and Technology*
 Nanyang Technological University*
 National University of Singapore*
 Singapore Management University*
 Sungkyunkwan University
 University of Hong Kong*
 Yonsei University

Australia

University of Melbourne
 University of Sydney

Canada

Simon Fraser University
 University of British Columbia*
 University of Toronto*
 University of Victoria*
 University of Waterloo*
 Western University*

Europe

Audencia Business School
 Eindhoven University of Technology
 Iuav University of Venice
 Semmelweis University (Medicine)
 Trinity College Dublin (Medicine)
 University of Amsterdam
 Utrecht University

Japan

Hokkaido University
 International Christian University
 Kyushu University
 Juntendo University (Medicine)
 Keio University, Mita Campus
 Keio University, Shonan Fujisawa Campus
 Nippon Sport Science University
 Sophia University
 Temple University, Japan Campus*
 Tokyo Medical and Dental University (Medicine)
 University of Tokyo*
 University of Tsukuba
 Waseda University*

United Kingdom

Durham University
 Imperial College London*
 King's College London
 Queen Mary University of London
 UCL
 University of Bath
 University of Cambridge
 University of Edinburgh
 University of Manchester
 University of Manchester (Medicine)
 University of Nottingham
 University of Nottingham (Medicine)
 University of the Arts London
 University of Warwick

United States of America

Arizona State University*
 Boston University*
 Brown University*
 Carnegie Mellon University*
 Chapman University
 Georgia Institute of Technology
 Grinnell College*
 Johns Hopkins University
 Northeastern University*
 Oregon State University*
 Purdue University*
 Rochester Institute of Technology*
 Stanford University
 University of California, Berkeley
 University of California, Davis*
 University of California, Los Angeles*
 University of California, San Diego*
 University of Florida
 University of Illinois, Urbana-Champaign*
 University of Maryland, College Park
 University of Michigan, Ann Arbor
 University of Southern California
 University of Washington